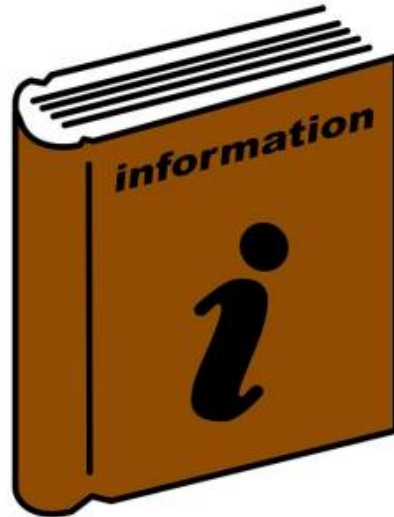


# Easy Read Guide

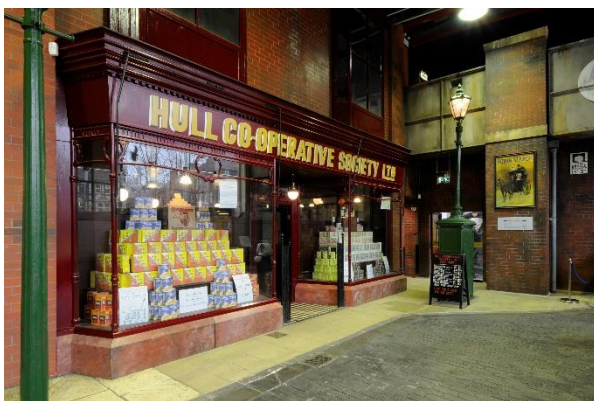


This is an Easy Read guide to visiting **Streetlife Museum**

Streetlife Museum has displays about transport from the past



Old buses, trams and trains



Old shops



Old fashioned carriages



Old fashioned bikes



This is the address of the museum



Streetlife Museum  
High Street  
Hull  
HU1 1PS



## Driving to the museum



There is Blue Badge parking on Gandhi Way and Alfred Gelder Street.



There is also pay and display parking nearby on Lowgate.



**3 min**

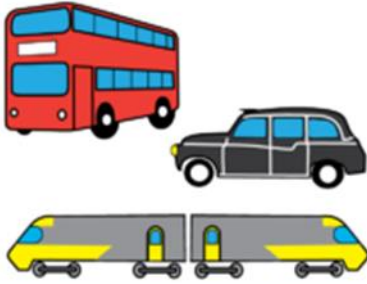
Lowgate is a 3 minute walk from the museum.



Minibus parking is available outside the museum.



Call 01482 616661 to book a minibus space.



## Coming to us on public transport



The nearest bus stops are on Alfred Gelder Street.

**3 min**



These bus stops are a 3 minute walk away from the museum.



Bus numbers 173,3,14,82 stop outside the White Hart pub.



Buses number 8, 56, 57,173, X7 stop on the opposite side of the road.



Hull Paragon Railway station is a 20 minutes walk away.



**20 min**



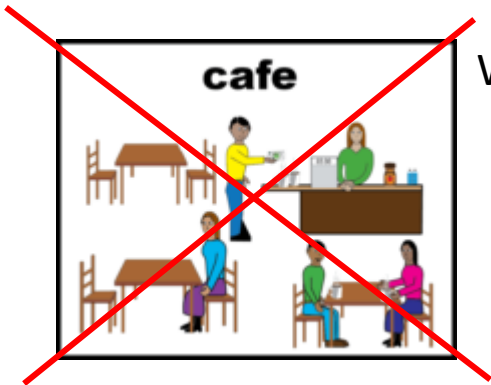
You can book a wheelchair accessible taxi by calling Wheelchair Taxi Transport Hull on 01482 473235.



## Our Museum



It is free to visit the museum.



We don't have a café.



We have a shop.



+



You can't eat and drink in the museum



There is level access to most of the ground floor displays.



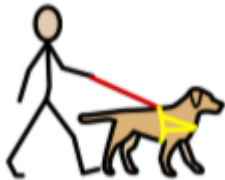
Level access means you don't need to go up steps or a lift.

There is a lift to the first floor.





The Signal box and the train platform are up steps.



Assistance dogs are welcome



BSL interpretation is available for talks and tours

## Toilets

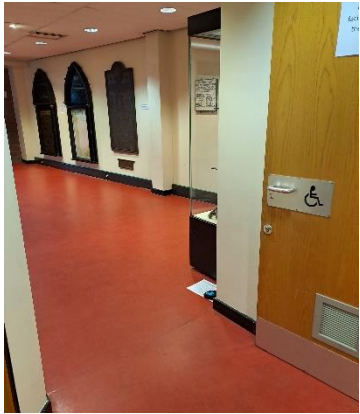


There are 2 sets of toilets including 2 Accessible Toilets.

The 1<sup>st</sup> is in the set of toilets near the entrance.



This toilet has a baby changing table and nappy bin.

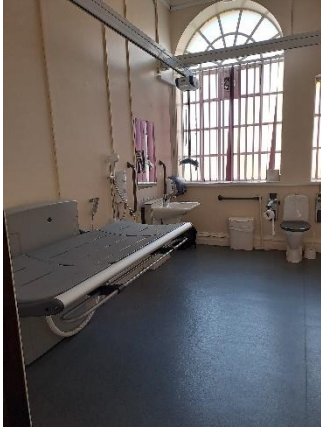


The 2<sup>nd</sup> accessible toilet is in the set of toilets at the far end of the museum.

### Changing Places Toilet



Changing Places toilets are larger accessible toilets for people who cannot use standard accessible toilets.



They have equipment like hoists, curtains, adult sized changing bed and space for carers.



Our nearest Changing Places Toilet is in the Guildhall.



The Guildhall is a 3 minute walk away from Streetlife Museum.



There is also a Changing Places toilet at Trinity Market.



Trinity Market is a 5 minute walk away from Streetlife Museum.

## Relaxed Crafts and Quiet Openings



We sometimes have relaxed craft sessions. These are disability-friendly sessions for people who would find busy sessions stressful.



We sometimes have Quiet openings. They are at times when the museum is less busy.



This is where we turn off sounds in the museum. This can help people who find it stressful when it is noisy.



To book relaxed events visit [www.eventbrite.co.uk/o/hull-museums-41215371083](https://www.eventbrite.co.uk/o/hull-museums-41215371083)

## More Information



High Street is a cobbled street. This makes it bumpy for people walking and in wheelchairs.



There is an accessible route map which shows the best route on our website.

<https://www.hullmuseums.co.uk/streetlife-museum/plan-your-visit-streetlife/2>

## Lighting



It is darker in the carriage gallery and bicycle gallery upstairs.

## Flooring



Streetlife museum has a street scene inside with cobbled flooring. It is a bit bumpy.

