

Ferens Art Gallery – Visual Story



Ferens Art Gallery has paintings, photographs and sculptures from medieval times to the modern day.

The gallery is usually quite quiet from 10am – 11am (unless there is a school in) and from 2pm – 4.30pm. We open at 11am on a Sunday. This is usually a quieter day unless there is an event going on.



It is free to visit the gallery.



If you want to visit us with a group of 15 or more people you need to book via our website <https://www.hullmuseums.co.uk/group-visit>. If you need support with this call 01482 318 733



There is blue badge parking available behind City Hall (across the road from the gallery entrance). The nearest multi-story carpark is at Princes Quay next door to the gallery.



The train station is about a 6 minute walk away (about 500m).

Arriving



You go into the gallery through these automatic doors.



There is a slope on the left hand side as you go towards the gallery and steps on the right hand side. There is another slope up to the front door.



This is the welcome desk. You'll be welcomed by one of our staff members wearing black trousers and a light blue or black polo shirt. When it's cold they might be wearing a black fleece with a green logo.



Some of our staff might be wearing face masks. Visitors don't have to wear masks but they can if they want to.



We have a box of sensory resources like ear defenders, coloured filters for reading, a magnifier and a fidget toy. You can borrow as many of the resources you need and carry them in one of our bags and bring them back before you leave.

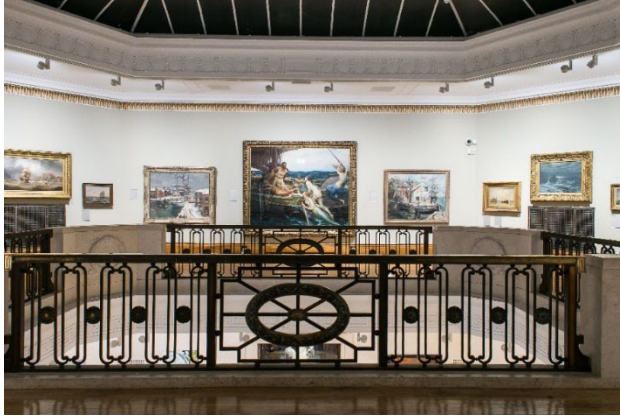


We have hand-held audio descriptive guides available to borrow from the front desk. The artworks You can also download the tracks to your own device here;
<https://vocaley.es.co.uk/audio-clip/ferens-art-gallery/>

Getting around



If people want to follow a route, we usually tell them to start with gallery 1 which has our oldest artworks.



There are 2 galleries upstairs.



You can reach them by using the lift or stairs.



The Explore Art gallery is open on the ground floor. It has lots of things to play with but it is important to be sensible and keep it tidy because there are real paintings in there that could get damaged.



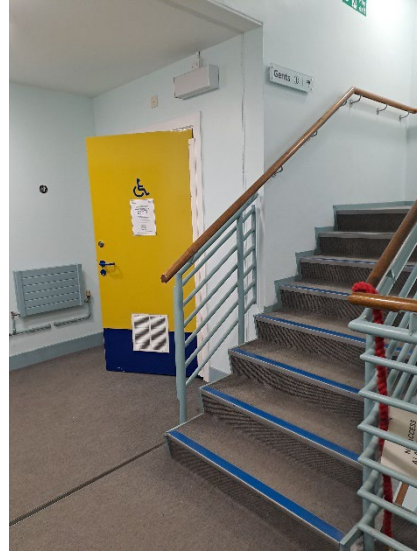
There are lots of chairs around the gallery for you to sit on. You can also borrow a stool if you need one.



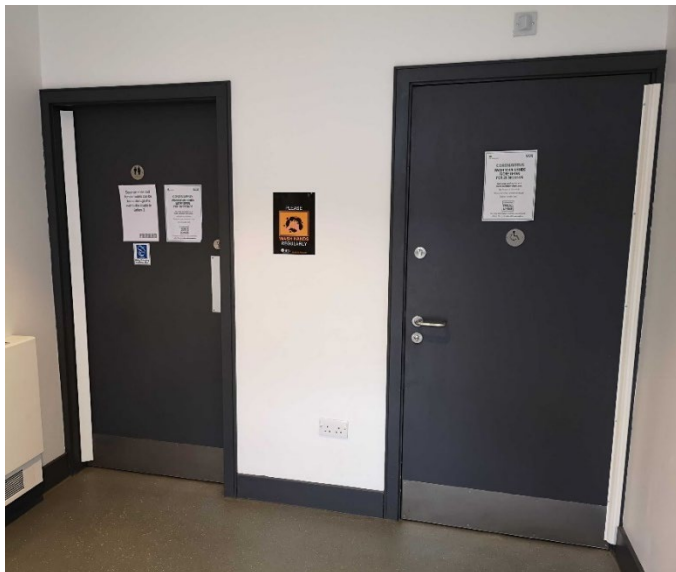
There is a café and shop at the back of the gallery. The café sells hot meals, hot and cold drinks, sandwiches and cakes. It can be busy at lunchtime.



This is the shop. You can buy gifts and souvenirs in here.



There is a set of toilets near the Studio (where we have events). There are women's and an accessible toilet on the ground floor and then a men's toilet upstairs.



There are toilets at the back of the café. They are an accessible toilet and unisex toilets (which means they can be used by anyone). There are separate toilet cubicles with a shared sink area.



The toilets have hand-driers which can be quite noisy.

Sensory Information



The lighting is darker in gallery 1 because the paintings feature stories or people from the bible, so it makes the room feel more like a church.



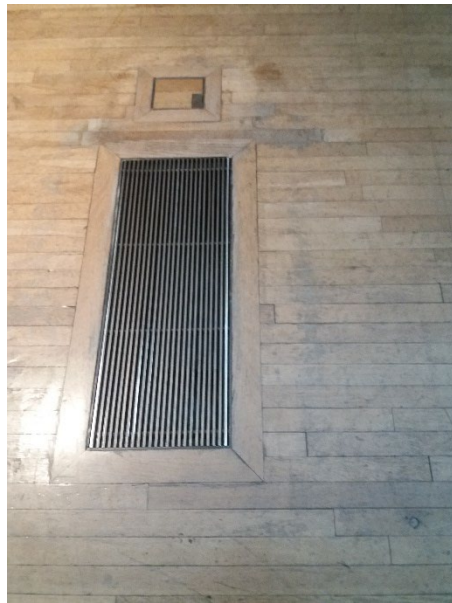
The lighting in The Studio (where we do workshops and activities) is a bit darker too. It doesn't have any natural light.



This is a photo from one of our family activities. They can sometimes be a bit busy and noisy too. Look out for our specially advertised quiet or relaxed activities on our Eventbrite page.



In the other galleries the lighting is brighter. In the centre court you can look up into a skylight at the top of the building.



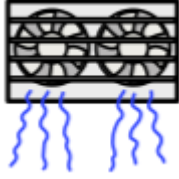
The flooring is wooden throughout most of the gallery with metal grates. It can make a noise when you walk over the grates.



The flooring in the centre court, the stairs and the shop and café is smooth ceramic tiles like the ones above (right).



We sometimes have some films which might have people speaking or background music. These are usually in the centre court or in the temporary exhibition spaces (galleries 4, 7 and 8).



We have air conditioning in the gallery which means there is a quiet humming noise as you walk around.



When people talk in the gallery, the noise can echo a bit and seem a bit louder because the rooms are big with tall ceilings. Mostly people speak quite quietly in the gallery though.



There is only one artwork which you are allowed to touch, a sculpture called *Large Frog* (see above).

We hope you enjoy your visit and we would love to hear about your experience. You can get in touch by calling 01482 616 398, emailing museums@hcandl.co.uk or through Hull Museums Facebook ([@FerensArtGallery](https://www.facebook.com/FerensArtGallery)) and Twitter ([@HullFerens](https://twitter.com/HullFerens)).

Other resources



To find out more you can look on our website <https://www.hullmuseums.co.uk> to see;



Visual Stories about visiting Streetlife Museum, Wilberforce House Museum, Hands on History Museum and Hull and East Riding Museum.

Thank you

To Ambitious about Autism, Downright Special, Autism in Museums and HAIG for their help in producing these Visual Stories.

Symbols

Created in WidgitOnline.com for Hull Museums Widgit Symbols
© Widgit Software 2002 - 2023



Supported using public funding by
**ARTS COUNCIL
ENGLAND**

FERENS

