

Hull and East Riding Museum – Visual Story



Hull and East Riding Museum has displays showing Prehistoric times, Stone Age, Bronze Age, Iron age, Roman, Medieval times and the English civil war.

Our quietest times are after 14.30 on a weekday. We also tend to be quiet before lunch at the weekends if there isn't an event on.



It is free to visit the museum.



If you want to visit us with a group of 15 or more people you need to book via our website <https://www.hullmuseums.co.uk/group-visit>. If you need support with this call 01482 318733



There is blue badge parking available behind on Gandhi Way (across the road from the main entrance). We have limited parking for minibuses. Call 01482 616661 to book.

The nearest larger car parks are on Osbourne street and a multistory on Market Place.



The train station is about a 15 minute walk away (1.1km).

Arriving



This is the entrance to the museum. The front doors are automatic.



This is the welcome desk and shop. You'll be welcomed by one of our staff members wearing black trousers, and a light blue or black polo shirt. When it's cold they might be wearing a black fleece with a green logo.



Some of our staff might still be wearing a mask. Visitors don't have to but you can if you want to.

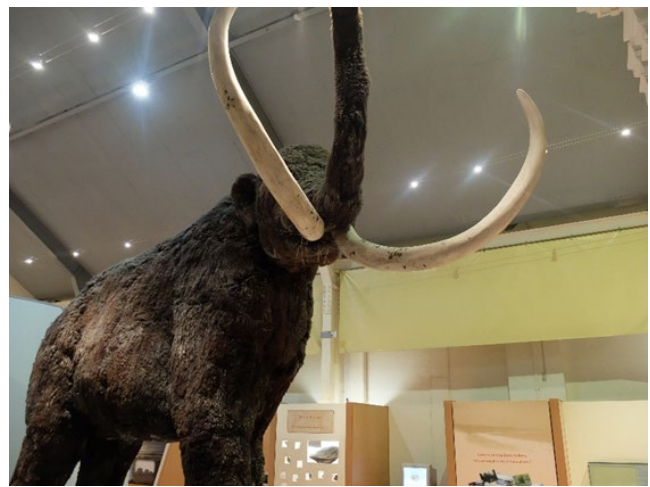


We have a box of sensory resources like ear defenders, coloured filters for reading, a magnifier and a fidget toy. You can borrow as many of the resources you need and carry them in one of our bags and bring them back before you leave.

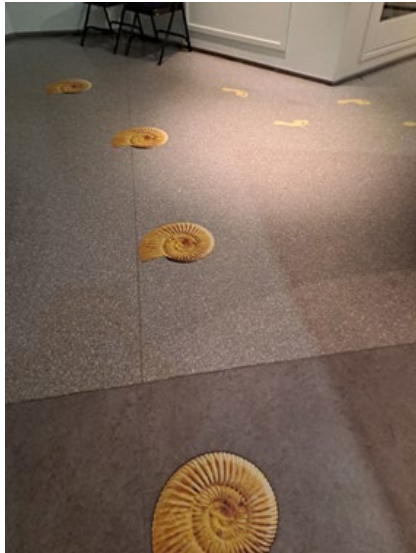
Getting around the museum



To get to the first museum displays you will need to go up 6 steps or in a platform lift.



At the top of those steps there are some mammoth footprints to follow which take you to the large mammoth model.



These turn into shells in the fossil and dinosaur section.



Then they turn into human footprints to take you into the stone age section.



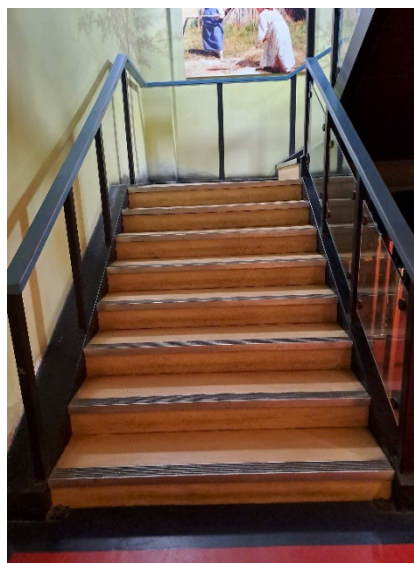
In the Celtic World part of the museum there is a ramp which takes you through the displays. At the end of that section there are steps and a platform lift.



Some of the walkways are a bit narrow. Once you have started round the museum, it follows a route and it can be difficult to go back the other way if there are other visitors.



There are seats around the museum for you to sit down on if you need to.



There are 2 sets of stairs or 2 lifts to take you to the first floor. This one is near the Roman gallery.



This lift and stairs are behind the mammoth near the front of the museum.

Facilities



There are 2 sets of toilets. These are near the entrance. There are womens, mens and an accessible toilet. There is a baby changing table in the ladies toilets.



There is another set of toilets at the back of the museum in the Roman Gallery, which is about half way round the museum. There is a women's and a men's toilet and a baby changing table outside the toilets.

Sensory Information



Some parts of the museum, like the Celtic World and Roman galleries have tracks playing peoples voices in other languages.



In some rooms there are also animal noises like the sounds of dogs barking and birds tweeting. In the Iron Age section and medieval gallery upstairs there are musical tracks which play when you walk into the room.



Some parts of the museum are a bit darker, this is to give it a bit of atmosphere and feel more like you are experiencing life in the past.



Upstairs in the Saxon and Viking gallery there is a light display which has a flashing light.



Some displays show skeletons or mannequins which some people might find scary.



There are some things you can touch and play with in the museum.



Sometimes we have events and family activities on which can be a bit busy and noisy. Sometimes members of staff dress up for these events and pretend to be character from the past.

We hope you enjoy your visit and we would love to hear about your experience. You can call us on 01482 300 300, email us museums@hcandl.co.uk or comment on Hull Museums Facebook ([@HullMuseums](https://www.facebook.com/HullMuseums)) and Twitter ([@HullMuseums](https://twitter.com/HullMuseums)).

Other resources

We have some more resources you might be interested in;



To find out more you can look on our website <https://www.hullmuseums.co.uk> to see;



Visual Stories about visiting Ferens Art Gallery, Hands on History Museum, Wilberforce House Museum and Streetlife Museum

Thank you

To Ambitious about Autism, Downright Special, Autism in Museums and HAIG for their help in producing these Visual Stories.

Symbols

Created in WidgitOnline.com for Hull Museums Widgit Symbols
© Widgit Software 2002 - 2023



Supported using public funding by
**ARTS COUNCIL
ENGLAND**

Working in partnership