

## Streetlife Museum – Visual Story



Streetlife Museum has displays showing trains, trams, cars, bicycles, carriages, carts and horses.

Our quietest times are after 14.30 on a weekday. We also tend to be quiet before lunch at the weekends if there isn't an event on.



It is free to visit the museum.



If you want to visit us with a group of 15 or more people you need to book via our website <https://www.hullmuseums.co.uk/group-visit>. If you need support with this call 01482 318 733



There is blue badge parking available behind on Gandhi Way (across the road from the main entrance). We have limited parking for minibuses. Call 01482 616661 to book.

The nearest larger car parks are on Osbourne



street and a multistory on Market Place.

The train station is about a 15 minute walk away (1.1km).

## Arriving



This is the entrance to Streetlife Museum.



This is the welcome desk and shop. You'll be welcomed by one of our staff members wearing black trousers, a light blue or black polo shirt. When it's cold they might be wearing a black fleece with a green logo.



At the shop in the entrance you can buy gifts and souvenirs.



Some of our staff will still be wearing face masks. Visitors don't have to but you can if you want.

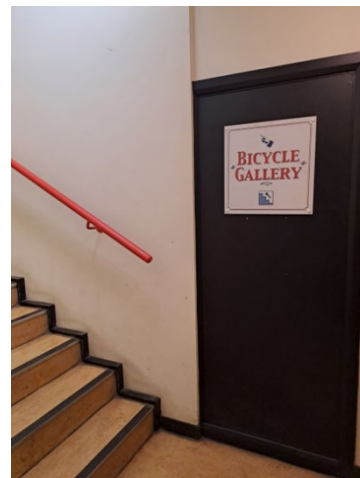
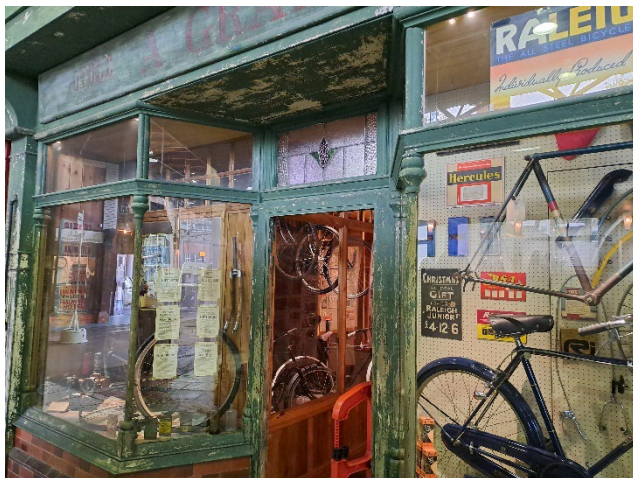


We have a box of sensory resources like ear defenders, coloured filters for reading, a magnifier and a fidget toy. You can borrow as many of the resources you need and carry them in one of our bags and bring them back before you leave.

## Getting around the museum



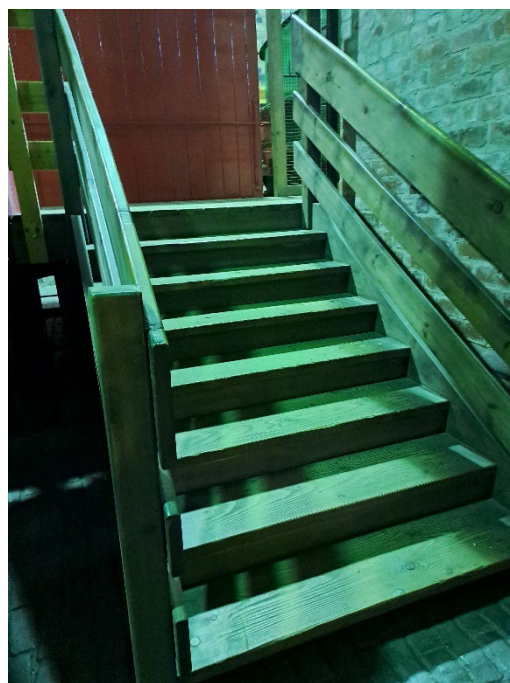
Each side of the museum has 2 flights of stairs to take you to the first floor. Near the entrance there is a slope to take you up to the steps and to the car ride.



There is a flight of stairs from the cycle shop on the Streetscene up to the cycle gallery upstairs.



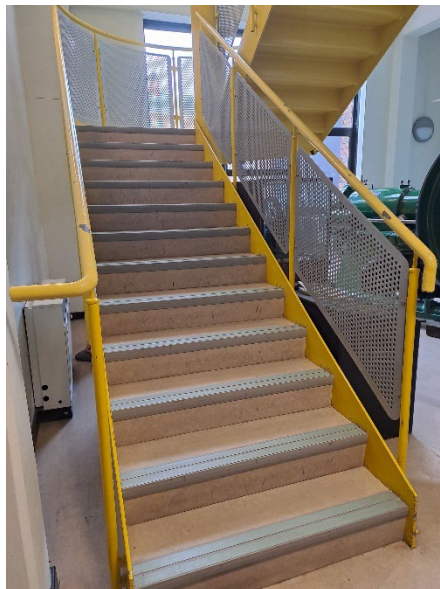
There are steps leading up to the signal box.



There are steps up to the train loading area and down at the other side.



There are 4 steps leading up to the car ride, but you can also use the slope on the other side of the tram. The car ride costs £1. On the car ride there is a screen in front of you showing a film which makes you feel like you are driving down a country lane. The car moves a bit so it feels more like a real car. There is a gentle tune playing on the video.



If you walk all the way down the Street scene there is a lift and a set of stairs which takes you up to the first floor.



You can't go on some of the vehicles that you used to be able to go on before. There will be signs or barriers to show you if you can't go on a vehicle.

## Facilities



There are mens and ladies toilets and an accessible toilet near the entrance. There is a baby changing table in the accessible toilet.





There are also toilets near the sweet shop at the end of the Street scene. There are men's, women's and an accessible toilet.



There are seats around the museum for you to sit on.

## **Sensory Information**



The lighting in some of the rooms is darker, this is to add atmosphere, to make it feel more like it would have done a long time ago.



There is a cinema showing films about transport from the past.



In the carriage gallery upstairs there is also a track of people's voices playing to show it would have been busy.



There is an arcade with old games downstairs. There is a Laughing Policeman arcade game where the figure inside laughs and shakes. You will need 20p or 50p pieces depending on the game but there is a change machine.



When you get close to the train on the platform, a track of a train noises will start playing. Behind the train voices of workers loading fruit on to the train are playing.



Sometimes we have events and family activities on. These can make the museum a bit busier and noisier. Sometimes

members of staff dress up for events and pretend to be characters from the past.

We hope you enjoy your visit and we would love to hear about your experience. You can call us on 01482 300 300, email us [museums@hcandl.co.uk](mailto:museums@hcandl.co.uk) or comment on Hull Museums Facebook ([@HullMuseums](https://www.facebook.com/HullMuseums)) and Twitter ([@Hull\\_Museums](https://twitter.com/Hull_Museums)).

## Other resources

We have some more resources you might be interested in;



To find out more you can look on our website <https://www.hullmuseums.co.uk> to see;



Visual Stories about visiting Ferens Art Gallery, Wilberforce House, Hands on History and Hull and East Riding Museum.

## Thank you

To Downright Special, Autism in Museums, Ambitious about Autism and HAIG for their help in producing these Visual Stories.

## Symbols

Created in WidgitOnline.com for Hull Museums Widgit Symbols  
© Widgit Software 2002 - 2023

