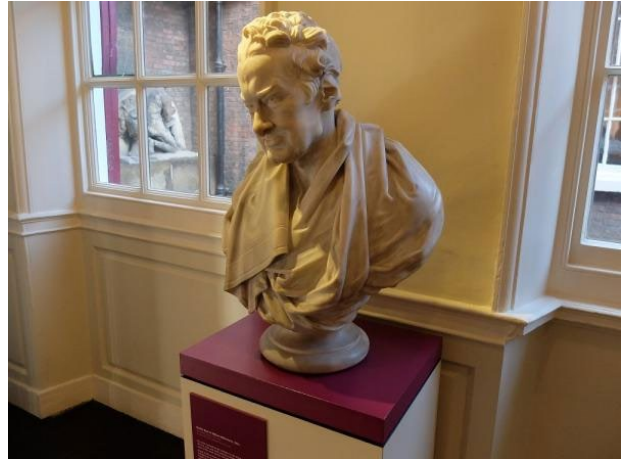


## Wilberforce House Museum – Visual Story



Wilberforce House Museum tells the story of William Wilberforce's life, his campaign to end slavery and West African culture.

Wilberforce House Museum is usually quiet unless there is an event on or a school is visiting.



It is free to visit the museum.



If you want to visit us with a group of 15 or more people you need to book via our website <https://www.hullmuseums.co.uk/group-visit>. If you need support with this call 01482 318 733



There is blue badge parking available behind on Gandhi Way (across the road from the main entrance). We have limited parking for minibuses. Call 01482 616661 to book.

The nearest larger car parks are on Osbourne street and a multistory on Market Place.



The train station is about a 15 minute walk away (1.1km).

### Arriving



You go into Wilberforce House Museum through an old red door in a brick archway.



The welcome desk is through another red door to the right. You'll be welcomed by one of our staff members wearing black trousers, a light blue or black polo shirt. When it's cold they might be wearing a black fleece with a green logo.

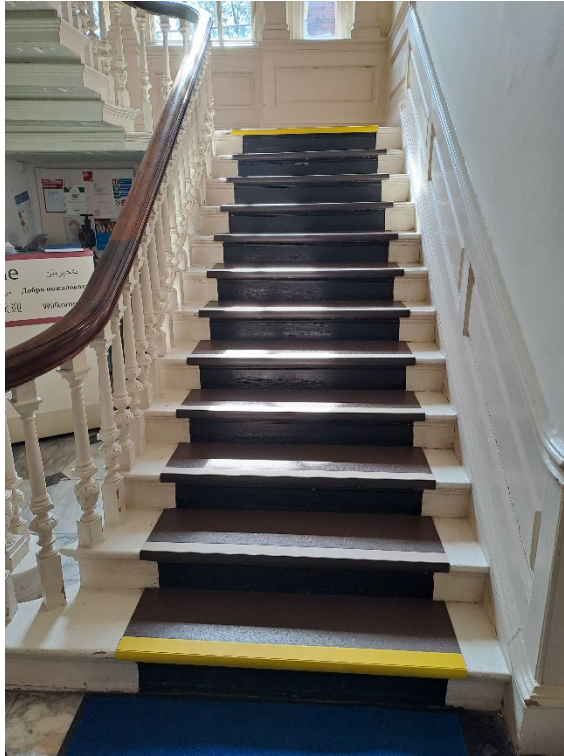


Some of our staff will still be wearing face masks. Visitors don't have to but you can if you want.



We have a box of sensory resources like ear defenders, coloured filters for reading, a magnifier and a fidget toy. You can borrow as many of the resources you need and carry them in one of our bags and bring them back before you leave.

## Getting around the museum



Wilberforce House Museum is actually 2 houses – Wilberforce House and Georgian Houses. There is a big flight of old wooden stairs in Wilberforce House and 2 big flights of stairs in Georgian Houses.



We have a lift which takes you from the ground floor to the first floor of Wilberforce House.



On the first floor of Wilberforce House we have 2 steps which can take you across to the first floor of Georgian Houses. Georgian Houses doesn't have a lift.



On the ground floor we have a ramp between the 2 houses.

## Facilities



To get to the toilets you need to leave the main building and walk down the this alleyway to the back of the building.



The accessible toilet is on your right before you reach the garden.



The men's and women's toilets are at the back of the house facing the garden.



There are seats around the museum for you to sit on.

## Sensory Information



Upstairs some of the rooms are a bit dark, this is to add to the atmosphere. The wall colour is dark and there aren't a lot of windows.



In some of the Wilberforce House rooms, the walls and floors are dark, so even though there are big windows, the room isn't bright.





Most of the rooms in Wilberforce House and Georgian Houses are light because of the natural light from the windows.



There are videos with sound playing in some of the galleries.



In one gallery there is a drum you can play. Other visitors might be making more noise in this room.



The museum has objects and stories about slavery which you and other visitors might find upsetting.



Downstairs in Georgian houses we have costumes you can try on.



Sometimes we have events and family activities on. These can make the museum a bit busier and noisier. This is the room the activities take place in. It is on the ground floor near the garden at the back of the building.

We hope you enjoy your visit and we would love to hear about your experience. You can call us on 01482 300 300, email us [museums@hcandl.co.uk](mailto:museums@hcandl.co.uk) or comment on Hull Museums Facebook ([@HullMuseums](https://www.facebook.com/HullMuseums)) and Twitter ([@HullMuseums](https://twitter.com/HullMuseums)).

## Other resources

We have some more resources you might be interested in;



To find out more you can look on our website <https://www.hullmuseums.co.uk> to see;



Visual Stories about visiting Ferens Art Gallery, Streetlife Museum, Hands on History Museum and Hull and East Riding Museum.

## Thank you

To Downright Special, Autism in Museums, Ambitious about Autism and HAIG for their help in producing these Visual Stories for the Museums.

## Symbols

Created in WidgitOnline.com for Hull Museums Widgit Symbols  
© Widgit Software 2002 – 2023

